

Firestone

BIAS TIRES

FULL-LINE BROCHURE



**HARVEY FIRESTONE
INVENTED FARM TIRES.
HIS COMPANY KEEPS
MAKING THEM BETTER.**

In 1936, Harvey Firestone put the American farmer on rubber. Every day the engineers who design Firestone farm tires work to make them the best they can be. For more than 75 years, these engineers have studied the challenges faced by our farmers and constantly improved design to make real solutions.

BE BIASED.

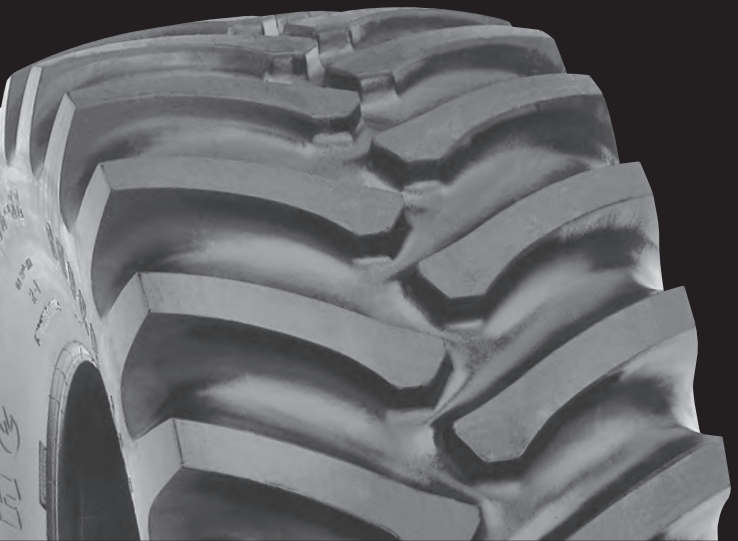
There's a reason Firestone bias-ply tires are the choice of so many manufacturers for O.E.M. equipment. They represent great value and unparalleled durability. No other manufacturer offers such a complete line of designs and sizes, ensuring the perfect tire for your application. Besides several tires that incorporate the proven Firestone 23° bar angle, you'll find these tires use a superior long bar/long bar tread design that offers a smoother ride and extended, even wear.

We're proud to be part of farm life all over the world. This is a brand with its heart in the heartland – Des Moines, Iowa – with its testing grounds on a farm in Columbiana, Ohio. The extensive research and development performed at the test farm means real solutions to real problems for the farm community. Rest assured your Firestone bias tires will deliver long life, maximum traction and minimum soil compaction.

Firestone

FirestoneAg.com

SUPER ALL TRACTION 23° – R-1



They're super. They're all traction. And they're among the most productive.

Today's best farm tractors and combines are shipped from the manufacturer riding on Firestone Super All Traction 23° tires. And why not? Besides the proven 23° bar angle that delivers superior traction, these tires offer long life and a smooth ride.

- A preferred original equipment manufacturer bias tire
- Proven 23° bar angle for best overall traction and wear
- Lugs positioned to resist vibration
- Open-center tread for self-cleaning
- Flexible sidewall rubber compounded with super-tough tread rubber
- Premium bias – a value-priced alternative to radials

Tube Type			New Tire Dimensions (in.)			
Tire Size	Ply Rating	Design Rim Width	Overall Width	Overall Dia.	Bar Height	Max. Load & Infl. (lbs. @ psi)
18.4-34	8	16.00	19.3	65.4	1.56	5080 @ 20
20.8-34	8	18.00	22.0	68.6	1.63	5840 @ 18
16.9-38	8	15.00	17.3	66.8	1.53	4940 @ 24
18.4-38	8	16.00	19.3	69.1	1.56	5360 @ 20
20.8-38	8	18.00	22.0	72.1	1.63	6150 @ 18
20.8-38	10	18.00	22.0	72.1	1.59	6950 @ 22
18.4-42	10	16.00	19.3	73.5	1.56	6600 @ 26

Tubeless			New Tire Dimensions (in.)			
Tire Size	Ply Rating	Design Rim Width	Overall Width	Overall Dia.	Bar Height	Max. Load & Infl. (lbs. @ psi)
23.1-26	8	20.00	23.3	63.0	1.66	5680 @ 16
23.1-26	14	20.00	23.3	63.0	1.66	7850 @ 28
28L-26	12	25.00	28.1	63.6	1.78	7400 @ 20
24.5-32	12	21.00	24.4	71.9	1.66	8800 @ 24
30.5L-32	14	27.00	30.1	71.6	1.69	9900 @ 22
30.5L-32	16	27.00	30.1	71.6	1.69	11000 @ 26
23.1-34	8	20.00	23.8	71.6	1.66	6400 @ 16
20.8-42	14	18.00	22.0	76.2	1.63	9100 @ 32

*'L' in tire size designates low-profile tire.



Firestone Bias Tires

SUPER ALL TRACTION FWD – R-1



Perfect for MFWD tractors.

- Multi-angle bar design that features:
 - Lower angle at shoulder for more traction and drawbar pull and a higher angle at nose for lateral stability and wear
 - Buttressed bar base for longer wear and a bead-and-rim flange protector to reduce downtime
- Offers a smooth ride and pull with less vibration

Tubeless			New Tire Dimensions (in.)			Max. Load & Infl. (lbs. @ psi)
Tire Size	Ply Rating	Design Rim Width	Overall Width	Overall Dia.	Bar Height	
14.9-26	10	13.00	14.8	52.4	1.50	4080 @ 32
16.9-26	10	15.00	17.3	54.8	1.53	4540 @ 28
18.4-26	6	16.00	18.8	57.6	1.56	3960 @ 16
18.4-26	10	16.00	18.8	57.6	1.56	5200 @ 26
13.6-28	10	12.00	14.2	51.7	1.47	3740 @ 36
14.9-28	10	13.00	15.2	54.6	1.50	4180 @ 32
16.9-28	10	15.00	17.3	56.4	1.53	4680 @ 28
14.9-30	10	13.00	15.2	56.1	1.47	4300 @ 32

SUPER ALL TRACTION HD – R-1



Designed for high-load cotton picker and grain cart applications.

- Rounded shoulder to eliminate tread lug compression
- Stronger carcass to handle heavier loads
- R-1 tread depth for optimum field performance

Tire Size	Tubeless			New Tire Dimensions (in.)			Max. Load & Infl. (lbs. @ psi)
	Load Index	Speed Symbol Rating	Design Rim Width	Overall Width	Overall Dia.	Bar Height	
520/85D38	173	A8	18.00	20.9	73.0	1.44	14300 @ 64

SUPER ALL TRACTION II 23° – R-1



Super traction and less compaction.

- Modern tread design maximizes traction and improves transport ride
- Larger footprint helps minimize soil compaction
- More lugs than our Traction Field & Road for better road wear and ride

Tire Size	Tubeless			New Tire Dimensions (in.)			Max. Load & Infl. (lbs. @ psi)
	LI/ Ply Rating	Speed Symbol Rating	Design Rim Width	Overall Width	Overall Dia.	Bar Height	
9.5-16	4	A8	8.00	9.5	33.2	1.22	1100 @ 20
9.5-24	6	A8	8.00	9.5	41.2	1.25	1870 @ 30
11.2-24	4	A8	10.00	11.2	43.4	1.28	1650 @ 18
11.2-24	8	A8	10.00	11.2	43.4	1.28	2540 @ 36
12.4-24	4	A8	11.00	12.4	45.6	1.34	1870 @ 16
12.4-24	8	A8	11.00	12.4	45.6	1.34	2830 @ 32
13.6-24	8	A8	12.00	13.6	47.6	1.34	3080 @ 28
14.9-24	6	A8	13.00	15.2	49.8	1.38	3000 @ 20
14.9-24	8	A8	13.00	15.2	49.8	1.44	3520 @ 26
12.4-28	6	A8	11.00	12.4	49.6	1.34	2540 @ 24
13.6-28	6	A8	12.00	13.6	51.6	1.38	2830 @ 22
14.9-28	6	A8	13.00	14.9	53.8	1.38	3200 @ 20
16.9-28	6	A8	15.00	16.9	56.5	1.47	3640 @ 18
16.9-30	6	A8	15.00	16.9	58.5	1.47	3740 @ 18
18.4-30	8	A8	16.00	18.4	61.1	1.53	4800 @ 20
18.4-34	8	A8	16.00	18.4	65.1	1.53	5080 @ 20
15.5-38	8	A8	14.00	15.5	61.8	1.38	4080 @ 26
18.4-38	8	A8	16.00	18.4	69.1	1.56	5360 @ 20
20.8-38	8	A8	18.00	20.8	72.2	1.63	6150 @ 18

TRACTION FIELD & ROAD – R-1



Great performance. Ultimate value.

- 23° tread bars for traction in the field, long wear on the road
- Rubber compounded for superior snag resistance and long wear
- Bar bracing for more stability and less squirm
- Bead-and-rim flange protector reduces downtime
- Large selection of sizes

Tube Type			New Tire Dimensions (in.)			Max. Load & Infl. (lbs. @ psi)
Tire Size	Ply Rating	Design Rim Width	Overall Width	Overall Dia.	Bar Height	
12.4-16	4	11.00	12.4	37.6	1.41	1430 @ 16
14.9-26	6	13.00	14.9	52.0	1.50	3080 @ 20
16.9-26	6	15.00	16.9	54.0	1.50	3520 @ 18
18.4-28	6	16.00	18.4	59.4	1.56	4080 @ 16
23.1-30	8	20.00	23.1	67.4	1.66	6000 @ 16
23.1-30	12	20.00	23.1	67.4	1.66	7600 @ 24
9.5-36	4	8.00	9.5	53.0	1.25	1760 @ 20
13.6-38	4	12.00	13.6	61.5	1.47	2540 @ 14
13.6-38	6	12.00	13.6	61.5	1.47	3300 @ 22
14.9-38	6	13.00	14.9	64.0	1.50	3740 @ 20
16.9-38	6	15.00	16.9	66.3	1.53	4180 @ 18
9.5-42	6	8.00	9.5	59.0	1.41	2400 @ 30

Tubeless			New Tire Dimensions (in.)			Max. Load & Infl. (lbs. @ psi)
Tire Size	Ply Rating	Design Rim Width	Overall Width	Overall Dia.	Bar Height	
18.4-16.1	8	16.00	18.4	44.8	1.56	2910 @ 20
8.3-24	4	7.00	8.3	38.9	1.19	1230 @ 22
11.2-24	6	10.00	11.2	43.0	1.34	2090 @ 26
12.4-24	12	11.00	12.4	45.8	1.41	3520 @ 48
14.9-24	6	13.00	14.9	49.0	1.50	3000 @ 20
16.9-24	8	15.00	16.9	52.4	1.53	4080 @ 24
13.6-28	12	12.00	13.6	51.5	1.47	4180 @ 42
12.4-42	6	9.00	11.6	63.1	1.41	3080 @ 24
12.4-42	10	9.00	11.6	63.1	1.41	4180 @ 40

FIELD & ROAD – R-1



Great replacement tire for vintage tractors.

- Wear- and snag-resistant tread rubber compound
- Excellent traction and durability
- Weather resistant sidewall compound

Tube Type			New Tire Dimensions (in.)			Max. Load & Infl. (lbs. @ psi)
Tire Size	Ply Rating	Design Rim Width	Overall Width	Overall Dia.	Bar Height	
11.2-28	4	10.00	11.2	47.0	1.16	1760 @ 18
11.2-28	6	10.00	11.2	47.0	1.16	2200 @ 26
9.5-32	4	8.00	9.5	48.9	1.13	1650 @ 20
11.2-36	4	10.00	11.2	55.0	1.16	2040 @ 18
12.4-36	4	11.00	12.4	57.0	1.22	2270 @ 16
13.6-36	4	12.00	13.6	59.1	1.28	2470 @ 14
12.4-38	4	11.00	12.4	59.0	1.22	2340 @ 16
12.4-38	6	11.00	12.4	59.0	1.22	2910 @ 24
12.4-38	8	11.00	12.4	59.0	1.22	3520 @ 32
Tubeless			New Tire Dimensions (in.)			Max. Load & Infl. (lbs. @ psi)
Tire Size	Ply Rating	Design Rim Width	Overall Width	Overall Dia.	Bar Height	
11.2-38	4	10.00	11.2	57.0	1.16	2090 @ 18
11.2-38	6	10.00	11.2	57.0	1.16	2540 @ 26

PULLER 2000 – HP



The competitive edge for pulling competitions.

- Special body construction for top performance
- Molded specifically for puller use
- Unique puller rubber compound is harder than a farm tire for longer edge wear and stronger bite
- Full-width tread for more ground contact

Tubeless			New Tire Dimensions (in.)			Max. Load & Infl. (lbs. @ psi)
Tire Size	Ply Rating	Design Rim Width	Overall Width	Overall Dia.	Bar Height	
24.5-32	HP	25.00	25.8	66.8	0.25	5200 @ 10
30.5L-32	HP	27.00	30.5	66.8	0.25	6950 @ 12

*'L' in tire size designates low-profile tire.

CHAMPION HYDRO ND – R-1



A unique tread design for irrigation systems.

- Non-directional tread pattern for equal traction in forward and reverse direction
- Excellent traction in constantly wet conditions
- Excellent self-cleaning tread design
- Designed with 0° bar angle for less slippage than conventional tread designs resulting in reduced soil disturbance and rutting
- Linear and pivot irrigation systems

Tubeless			New Tire Dimensions (in.)			Creep Speed*
Tire Size	Load Index	Design Rim Width	Overall Width	Overall Dia.	Bar Height	Max. Load & Infl. (lbs. @ psi)
380/85D24	145	12.00	15.0	49.4	1.47	6400 @ 26
290/85D38	141	10.00	12.1	58.8	1.34	5680 @ 24

* Creep Speed – Not over 200 feet in a 30-minute period.

IRRIGATION SPECIAL – R-1



Designed specifically for mobile irrigation equipment.

- Big footprint for less yield-robbing compaction
- Proven 23° bar angle for great traction
- Tough nylon-cord body for durability and wear
- Rugged dual rubber construction:
 - Flexible sidewall rubber
 - Super-tough tread rubber
 - Resistance to weather checking

Tubeless			New Tire Dimensions (in.)			Creep Speed*
Tire Size	Ply Rating	Design Rim Width	Overall Width	Overall Dia.	Bar Height	Max. Load & Infl. (lbs. @ psi)
11.2-24	4	10.00	11.2	43.1	1.00	3480 @ 24
14.9-24	4	13.00	14.9	50.0	1.13	5060 @ 18
14.9-24	6	13.00	14.9	50.0	1.13	6330 @ 26

* Creep Speed – Not over 200 feet in a 30-minute period.

CHAMPION SPADE GRIP – R-2



**WHEN THE
GOING GETS SOGGY,
THE SPADE GRIP
GETS GOING.**

The Spade Grip grips, even in mud.

- 45° extra-deep tread for extra traction in wet soil
- Curved tread bars keep this tread clean
- Compounded tread rubber fights off acid and ozone
- R-2 deep-bar design – a proven performer
- Buttressed tire bars for improved performance
- Bolstered nose for long wear

Tube Type			New Tire Dimensions (in.)			
Tire Size	Ply Rating	Design Rim Width	Overall Width	Overall Dia.	Bar Height	Max. Load & Infl. (lbs. @ psi)
23.1-30	8	20.00	23.1	69.6	3.41	6000 @ 16
24.5-32	10	21.00	24.5	73.3	3.50	7850 @ 20
18.4-34	6	16.00	18.4	65.8	3.13	4400 @ 16
15.5-38	6	14.00	15.5	64.9	2.69	3520 @ 20
18.4-38	8	16.00	18.4	69.8	3.13	5360 @ 20
20.8-38	10	18.00	20.9	73.0	3.28	6950 @ 22

Tubeless			New Tire Dimensions (in.)			Max. Load & Infl. (lbs. @ psi)
Tire Size	Ply Rating	Design Rim Width	Overall Width	Overall Dia.	Bar Height	
14.9-24	12	13.00	14.8	51.9	2.81	4400 @ 38
16.9-26	10	15.00	17.3	56.6	2.94	4540 @ 28
18.4-26	10	16.00	18.4	57.8	3.13	5200 @ 26
23.1-26	10	20.00	23.1	66.5	3.13	6400 @ 20
28L-26	12	25.00	28.1	65.9	3.41	7400 @ 20
28L-26	16	25.00	28.1	65.9	3.41	9100 @ 28
18.4-30	6	16.00	18.4	61.8	3.13	4180 @ 16
18.4-30	10	16.00	18.4	61.8	3.13	5520 @ 26
30.5L-32	14	27.00	30.5	74.0	3.56	9900 @ 22
35.5L-32	12	31.00	35.5	80.8	3.75	11000 @ 16
13.6-38	6	12.00	13.6	63.0	2.69	3300 @ 22
20.8-38	14	18.00	20.9	73.0	3.28	8550 @ 32
13.6-46	6	12.00	13.3	70.4	2.69	3640 @ 22

*'L' in tire size designates low-profile tire.

ALL TRACTION UTILITY – R-4



Proven design for long wear, dependability and value.

- Excellent traction and flotation characteristics
- Special rubber compounds and nylon-cord body for superior impact resistance and long wear
- Appropriate use on Ag utility/compact tractors, steer tire applications and cotton pickers
- Super-tough tread for long tire life on hard-surface roads
- Wide buttressed lugs for durability and long life in utility applications

Tube Type			New Tire Dimensions (in.)			Max. Load & Infl. (lbs. @ psi)
Tire Size	Ply Rating	Design Rim Width	Overall Width	Overall Dia.	Bar Height	
14.9-24	8	13.00	14.9	48.9	1.03	5080 @ 30
14.9-24	12	13.00	14.9	48.9	1.03	6400 @ 42
16.9-24	8	15.00	16.9	51.9	1.06	5840 @ 28
17.5L-24	8	15.00	17.5	48.9	1.00	5360 @ 26
420/70-24	6	13.00	16.7	46.4	1.06	3960 @ 26

WE BRING EVERYTHING NEEDED

TO SERVICE YOUR TIRES

INCLUDING A SENSE OF URGENCY.

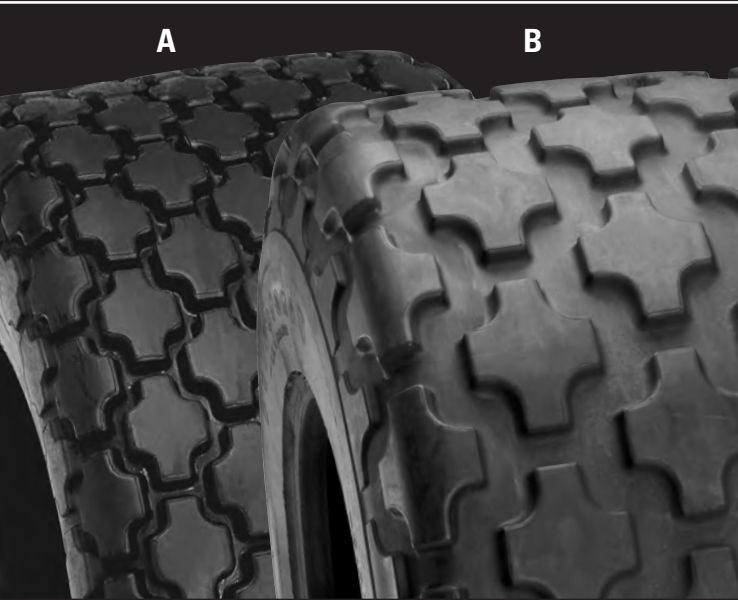
Your Certified Firestone Farm Tire Dealer is part of the largest, specially trained and equipped farm tire service network in the nation. That includes access to a full product line, service trucks for on-farm and in-field needs, authorized warranty service and an understanding of your business.

Nobody services farm tires like your Certified Firestone Farm Tire Dealer.

Firestone

FirestoneAg.com

ALL NON-SKID TRACTOR – R-3



Designed for orchard, citrus groves and turf.

- Particularly suited for sandy areas, airports, golf courses, cemetery and highway maintenance
- Maximum flotation and minimum ground disturbance

Tube Type			New Tire Dimensions (in.)			Max. Load & Infl. (lbs. @ psi)
Tire Size	Ply Rating	Design Rim Width	Overall Width	Overall Dia.	Bar Height	
9.5-24(A)	4	8.00	9.5	39.8	0.44	1480 @ 20
13.6-28(A)	6	12.00	13.6	51.5	0.75	2830 @ 22

Tubeless			New Tire Dimensions (in.)			Max. Load & Infl. (lbs. @ psi)
Tire Size	Ply Rating	Design Rim Width	Overall Width	Overall Dia.	Bar Height	
8.3-24(A)	4	7.00	8.3	38.8	0.56	1230 @ 22
14.9-24(A)	6	13.00	14.9	49.8	0.72	3000 @ 20
16.9-24(A)	6	15.00	16.9	51.9	0.88	3420 @ 18
16.9-24(A)	10	15.00	16.9	51.9	0.88	4400 @ 28
18.4-26(A)	6	16.00	19.0	56.0	0.91	3960 @ 16
18.4-26(A)	12	16.00	19.0	56.0	0.91	5840 @ 32
23.1-26(A)	8	20.00	23.1	59.7	0.66	5680 @ 16
23.1-26(A)	12	20.00	23.1	59.7	0.66	7150 @ 24
28L-26(A)	12	25.00	28.1	60.7	0.66	7400 @ 20
28L-26(A)	16	25.00	28.1	60.7	0.66	9100 @ 28
24.5-32(A)	12	21.00	24.7	69.1	1.09	8800 @ 24
24.5-32(A)	16	21.00	24.7	69.1	1.09	9900 @ 30
30.5L-32(A)	14	27.00	30.5	70.6	1.19	9900 @ 22
30.5L-32(A)	16	27.00	30.5	70.6	1.19	11000 @ 26
35.5L-32(B)	20	31.00	36.4	78.2	1.22	15200 @ 28

'L' in tire size designates low-profile tire.



ALL NON-SKID TRACTOR II – R-3



A full-sized sequel to a popular ANS Tractor.

- Full-dimension, full-tread depth
- Excellent for large implements
- Five ribs made of tough rubber buttons for long wear and great traction

Tubeless			New Tire Dimensions (in.)			Max. Load & Infl. (lbs. @ psi)
Tire Size	Ply Rating	Design Rim Width	Overall Width	Overall Dia.	Bar Height	
28L-26	12	25.00	28.1	62.6	1.06	7400 @ 20
28L-26	16	25.00	28.1	62.6	1.06	9100 @ 28

'L' in tire size designates low-profile tire.

TURF & FIELD – R-3

5-RIB

7-RIB



Designed for drive axle use on golf courses and parks.

- Extra traction and resistance to lateral sway
- Extra flotation to prevent chunking and cutting of turf on level and sloping areas
- No special rims required (fits standard one-piece agricultural rim)

5-RIB

Tubeless			New Tire Dimensions (in.)			Max. Load & Infl. (lbs. @ psi)
Tire Size	Ply Rating	Design Rim Width	Overall Width	Overall Dia.	Bar Height	
9.5-16	6	8.00	9.5	32.3	0.59	1390 @ 30
21.5L-16.1	6	18.00	20.8	44.1	1.03	2760 @ 12
21.5L-16.1	10	18.00	20.8	44.1	1.03	3860 @ 22
19.5L-24	10	16.00	19.0	52.4	0.84	4680 @ 24

7-RIB

Tube Type			New Tire Dimensions (in.)			Max. Load & Infl. (lbs. @ psi)
Tire Size	Ply Rating	Design Rim Width	Overall Width	Overall Dia.	Bar Height	
13.6-16	4	12.00	13.5	38.5	0.38	1570 @ 14

'L' in tire size designates low-profile tire.

SUPER TRACTION LOADER – I-3



Great tire for specialty applications.

- Deep overlapping bar cleats and low-profile design for excellent traction
- Great tire for medium duty service use
- Tough sidewall for long wear
- Appropriate for use on air seeders and seeding applications

Tubeless			New Tire Dimensions (in.)			Max. Load & Infl. (lbs. @ psi)
Tire Size	Ply Rating	Design Rim Width	Overall Width	Overall Dia.	Bar Height	
27x8.50-15	6	7.00	8.4	26.7	0.41	2480 @ 45

DURAFORCE DT – NHS



Heavy-duty tire for specialty ag applications.

- Appropriate for use on air seeders and seeding equipment
- Heavy-duty sidewall and large curb rib for more stability and puncture resistance
- Deep tread, buttressed lugs, full sidewall protection and aggressive rim deflector
- Special puncture-resistant rubber compounds

Tubeless			New Tire Dimensions (in.)			Max. Load & Infl. (lbs. @ psi)
Tire Size	Ply Rating	Design Rim Width	Overall Width	Overall Dia.	Bar Height	
395/55D16.5 33x15.5-16.5	12	12.00	15.5	33.0	0.88	6835 @ 60

DURAFORCE ND – NHS



Traction tread built for severe service conditions.

- Non-directional tread design provides excellent traction and flotation
- Tough sidewall for greater stability

Tubeless			New Tire Dimensions (in.)			Max. Load & Infl. (lbs. @ psi)
Tire Size	Ply Rating	Design Rim Width	Overall Width	Overall Dia.	Bar Height	
355/70D17.5 14-17.5	10	10.50	13.8	36.2	0.75	6950 @ 70
385/65D19.5 15-19.5	12	11.75	15.3	40.1	0.78	8800 @ 70
445/65D22.5 18-22.5	16	14.00	18.0	46.2	0.88	14300 @ 85

SUPER TRACTION DUPLEX – NHS



Value compact tractor tire.

- Designed for compact tractors and low-profile design for traction and flotation
- Great tire for medium-duty service use
- Tough sidewall for extended life

Tubeless				New Tire Dimensions (in.)			Max. Load & Infl. (lbs. @ psi)
Tire Size	Load Index	Speed Symbol Rating	Design Rim Width	Overall Width	Overall Dia.	Bar Height	
215/65D14	104	A8	7.00	8.3	25.0	0.53	1980 @ 52

BIAS TIRES
LISTED BY RIM DIAMETER

Tire Size	L/I Ply	Description	Material Number	Page
215/65D14	104A8	Super Traction Duplex TL NHS	365-588	29
27x8.50-15	6	Super Traction Loader TLI3	350-672	26
9.5-16	4	Super All Traction II 23 TLR1	376-808	11
9.5-16	6	Turf & Field TLR3	351-776	25
12.4-16	4	Traction Field & Road TTR1	345-202	13
13.6-16	4	Turf & Field TTR3	345-210	25
18.4-16.1	8	Traction Field & Road TLR1	359-564	13
21.5L-16.1	6	Turf & Field TLR3	312-770	25
21.5L-16.1	10	Turf & Field TLR3	355-887	25
33x15.5-16.5	12	DuraForce DT TL NHS	360-503	27
395/55D16.5	12	DuraForce DT TL NHS	360-503	27
14-17.5	10	DuraForce ND TL NHS	361-666	28
355/70D17.5	10	DuraForce ND TL NHS	361-666	28
15-19.5	12	DuraForce ND TL NHS	361-682	28
385/65D19.5	12	DuraForce ND TL NHS	361-682	28
18-22.5	16	DuraForce ND TL NHS	361-720	28
445/65D22.5	16	DuraForce ND TL NHS	361-720	28
8.3-24	4	All Non-Skid Tractor TLR3	351-733	23
8.3-24	4	Traction Field & Road TLR1	351-644	13
9.5-24	4	All Non-Skid Tractor TTR3	306-096	22
9.5-24	6	Super All Traction II 23 TLR1	371-351	11
11.2-24	4	Irrigation Special TLR1	321-893	17
11.2-24	4	Super All Traction II 23 TLR1	365-163	11
11.2-24	6	Traction Field and Road	351-725	13
11.2-24	8	Super All Traction II 23 TLR1	365-180	11
12.4-24	4	Super All Traction II 23 TLR1	365-299	11
12.4-24	8	Super All Traction II 23 TLR1	372-541	11
12.4-24	12	Traction Field & Road TLR1	357-987	13
13.6-24	8	Super All Traction II 23 TLR1	372-575	11
14.9-24	4	Irrigation Special TTR1	322-679	17
14.9-24	4	Irrigation Special TLR1	322-377	17
14.9-24	6	All Non-Skid Tractor TLR3	359-556	23

BIAS TIRES
LISTED BY RIM DIAMETER

Tire Size	L/I Ply	Description	Material Number	Page
14.9-24	6	Irrigation Special TLR1	000-912	17
14.9-24	6	Super All Traction II 23 TLR1	365-061	11
14.9-24	6	Traction Field and Road	345-334	13
14.9-24	8	All Traction Utility TTR4	351-849	20
14.9-24	8	Super All Traction II 23 TLR1	373-238	11
14.9-24	12	All Traction Utility TTR4	358-584	20
14.9-24	12	Champion Spade Grip TLR2	359-610	19
16.9-24	6	All Non-Skid Tractor TLR3	351-709	23
16.9-24	8	All Traction Utility TTR4	309-281	20
16.9-24	8	Traction Field & Road TLR1	359-505	13
16.9-24	10	All Non-Skid Tractor TLR3	358-789	23
17.5L-24	8	All Traction Utility TTR4	315-486	20
19.5L-24	10	Turf & Field TLR3	356-190	25
420/70-24	6	All Traction Utility TTR4	351-040	20
380/85D24	145	Champion Hydro ND TLR1	373-765	16
14.9-26	6	Traction Field & Road TTR1	345-288	13
14.9-26	10	Super All Traction FWD TLR1	343-897	8
16.9-26	6	Traction Field & Road TTR1	355-119	13
16.9-26	10	Champion Spade Grip TLR2	326-712	19
16.9-26	10	Super All Traction FWD TLR1	343-900	8
18.4-26	6	All Non-Skid Tractor TLR3	315-958	23
18.4-26	6	Super All Traction FWD TLR1	343-846	8
18.4-26	10	Champion Spade Grip TLR2	326-445	19
18.4-26	10	Super All Traction FWD TLR1	343-919	8
18.4-26	12	All Non-Skid Tractor TLR3	369-753	23
23.1-26	8	All Non-Skid Tractor TLR3	345-377	23
23.1-26	8	Super All Traction 23 TLR1	344-095	7
23.1-26	10	Champion Spade Grip TLR2	362-647	19
23.1-26	12	All Non-Skid Tractor TLR3	323-527	23
23.1-26	14	Super All Traction 23 TLR1	362-460	7
28L-26	12	All Non-Skid Tractor TLR3	351-008	23
28L-26	12	All Non-Skid Tractor II TLR3	351-857	26

Continued on next page.

BIAS TIRES
LISTED BY RIM DIAMETER

Tire Size	L/I Ply	Description	Material Number	Page
28L-26	12	Champion Spade Grip TLR2	358-282	19
28L-26	12	Super All Traction 23 TLR1	344-060	7
28L-26	16	All Non-Skid Tractor TLR3	362-220	23
28L-26	16	All Non-Skid Tractor II TLR3	362-085	24
28L-26	16	Champion Spade Grip TLR2	379-868	19
11.2-28	4	Field & Road TTR1	304-743	14
11.2-28	6	Field & Road TTR1	361-623	14
12.4-28	6	Super All Traction II 23 TLR1	365-452	11
13.6-28	6	All Non-Skid Tractor TTR3	306-193	22
13.6-28	6	Super All Traction II 23 TLR1	365-265	11
13.6-28	10	Super All Traction FWD TLR1	343-927	8
13.6-28	12	Traction Field & Road TLR1	361-917	13
14.9-28	6	Super All Traction II 23 TLR1	365-078	11
14.9-28	10	Super All Traction FWD TLR1	343-935	8
16.9-28	6	Super All Traction II 23 TLR1	365-469	11
16.9-28	10	Super All Traction FWD TLR1	343-943	8
18.4-28	6	Traction Field & Road TTR1	338-494	13
14.9-30	10	Super All Traction FWD TLR1	343-951	8
16.9-30	6	Super All Traction II 23 TLR1	365-282	11
18.4-30	6	Champion Spade Grip TLR2	358-274	19
18.4-30	8	Super All Traction II 23 TLR1	372-626	11
18.4-30	10	Champion Spade Grip TLR2	342-432	19
23.1-30	8	Champion Spade Grip TTR2	311-189	18
23.1-30	8	Traction Field & Road TTR1	338-613	13
23.1-30	12	Traction Field & Road TTR1	364-857	13
9.5-32	4	Field & Road TTR1	304-794	14
24.5-32	10	Champion Spade Grip TTR2	311-626	18
24.5-32	12	All Non-Skid Tractor TLR3	322-296	23
24.5-32	12	Super All Traction 23 TLR1	344-079	7
24.5-32	16	All Non-Skid Tractor TLR3	360-384	23
24.5-32	HP	Puller 2000 TLHP	369-685	15
30.5L-32	14	All Non-Skid Tractor TLR3	359-904	23

BIAS TIRES
LISTED BY RIM DIAMETER

Tire Size	L/I Ply	Description	Material Number	Page
30.5L-32	14	Champion Spade Grip TLR2	358-231	19
30.5L-32	14	Super All Traction 23 TLR1	351-067	7
30.5L-32	16	All Non-Skid Tractor TLR3	357-758	23
30.5L-32	16	Super All Traction 23 TLR1	351-075	7
30.5L-32	HP	Puller 2000 TLHP	361-992	15
35.5L-32	12	Champion Spade Grip TLR2	358-258	19
35.5L-32	20	All Non-Skid Tractor TLR3	357-820	23
18.4-34	6	Champion Spade Grip TTR2	311-154	18
18.4-34	8	Super All Traction 23 TTR1	343-560	7
18.4-34	8	Super All Traction II 23 TLR1	372-592	11
20.8-34	8	Super All Traction 23 TTR1	343-579	7
23.1-34	8	Super All Traction 23 TLR1	344-109	7
9.5-36	4	Traction Field & Road TTR1	338-443	13
11.2-36	4	Field & Road TTR1	304-808	14
12.4-36	4	Field & Road TTR1	304-816	14
13.6-36	4	Field & Road TTR1	304-824	14
11.2-38	4	Field & Road TLR1	355-003	14
11.2-38	6	Field & Road TLR1	000-929	14
12.4-38	4	Field & Road TTR1	304-840	14
12.4-38	6	Field & Road TTR1	304-921	14
12.4-38	8	Field & Road TTR1	354-805	14
13.6-38	4	Traction Field & Road TTR1	338-036	13
13.6-38	6	Champion Spade Grip TLR2	379-885	19
13.6-38	6	Traction Field & Road TTR1	338-087	13
14.9-38	6	Traction Field & Road TTR1	338-516	13
15.5-38	6	Champion Spade Grip TTR2	311-219	18
15.5-38	8	Super All Traction II 23 TLR1	372-524	11
16.9-38	6	Traction Field & Road TTR1	338-141	13
16.9-38	8	Super All Traction 23 TTR1	343-587	7
18.4-38	8	Champion Spade Grip TTR2	311-448	18
18.4-38	8	Super All Traction 23 TTR1	343-595	7
18.4-38	8	Super All Traction II 23 TLR1	372-507	11

Continued on next page.

BIAS TIRES
LISTED BY RIM DIAMETER

BRIDGESTONE AMERICAS TIRE OPERATIONS, LLC
AGRICULTURAL TIRE DIVISION

Tire Size	L/I Ply	Description	Material Number	Page
20.8-38	8	Super All Traction 23 TTR1	343-609	7
20.8-38	8	Super All Traction II 23 TLR1	367-237	11
20.8-38	10	Champion Spade Grip TTR2	311-529	18
20.8-38	10	Super All Traction 23 TTR1	343-633	7
20.8-38	14	Champion Spade Grip TLR2	351-970	19
290/85D38	141	Champion Hydro ND TLR1	003-147	16
520/85D38	173A8	Super All Traction HD TLR1	363-038	9
9.5-42	6	Traction Field & Road TTR1	338-532	13
12.4-42	6	Traction Field & Road TLR1	355-097	13
12.4-42	10	Traction Field & Road TLR1	358-630	13
18.4-42	10	Super All Traction 23 TTR1	343-641	7
20.8-42	14	Super All Traction 23 TLR1	352-888	7
13.6-46	6	Champion Spade Grip TLR2	000-917	19



BIAS TIRES

LIMITED WARRANTY
FOR FIRESTONE BIAS PLY AGRICULTURAL TIRES

WARRANTY

Firestone

FirestoneAg.com

