

Firestone

AGRICULTURAL SOLUTIONS

THE LEADER IN THE FIELD

AGRICULTURAL TRACKS





AGRICULTURAL TRACKS

FOR HIGH-HORSEPOWER TRACTORS

Technological advancements, smart engineering and manufacturing expertise make Firestone Tracks your performance choice for today's agriculture. The result is a high-quality product and productivity in the field.



MADE FOR AGRICULTURE. PROVEN TO PERFORM. BUILT TO LAST.

When it comes to tracks for agriculture, we understand the need for strength and durability. Our commitment to quality is steadfast.

ADDED DURABILITY – One-piece vulcanized for a seamless molded radius.

SIDEWALL PROTECTION – Pro-Edge technology provides extra protection.

RUBBER COMPOUNDS – Added wear and cut resistance.

CABLE PACKAGE – Engineered for optimum performance.

FLEXIBLE STEEL CABLE – Allows for optimal durability.





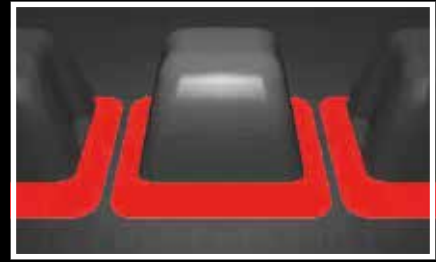
ONE-PIECE VULCANIZATION

One-piece vulcanization provides a seamless molded radius for added strength and durability.



TREAD BARS

Tread bars and main carcass are vulcanized as one piece with a seamless molded radius. By using this process the tread bars remain steadfast to the rubber track.



GUIDE LUGS

Guide lugs are vulcanized with the main carcass as one piece and made of a wear resistant rubber compound for added durability.



INNER SURFACE

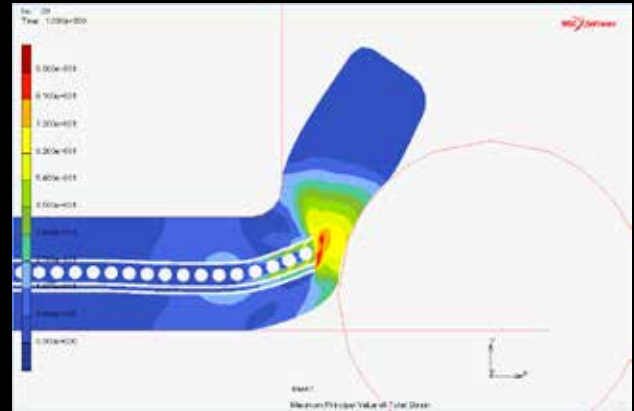
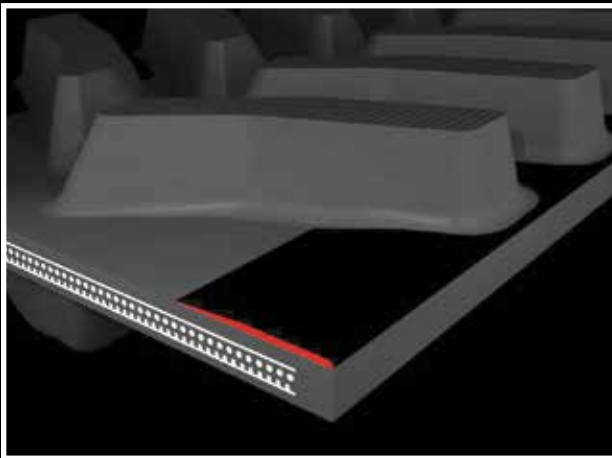
Rubber compounds formulated for the roller path area of the rubber track deliver added cut resistance.



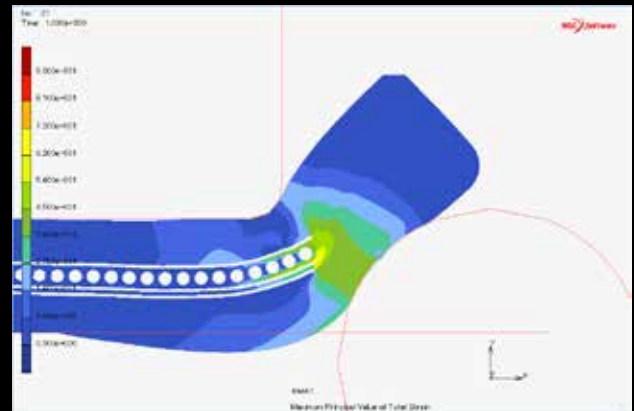
PRO-EDGE

SIDEWALL PROTECTION

Exposed track edges are vulnerable to abuse in field operations – and particularly during hard turns. Pro-Edge optimum sidewall protection technology, an exclusive feature of Firestone tracks, provides additional stiffness and protection for the main carcass.



When force is applied to tracks without Pro-Edge, higher bending and stress occur, increasing the likelihood of damage to the rubber track.



When the same force is applied to tracks with Pro-Edge, stress and bending are minimized, reducing the risk of damage.



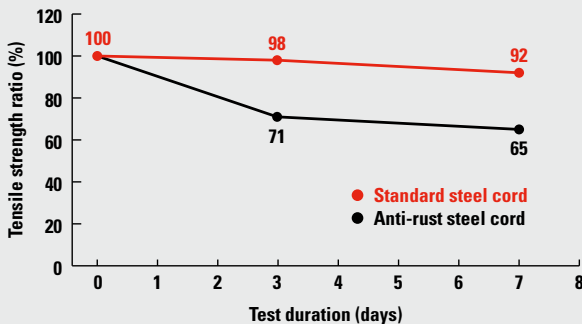
A CABLE/PLY PACKAGE ENGINEERED TO PERFORM.

Our cable/ply package helps minimize uneven load distribution, reducing wear and damage to the inner surface of the rubber tracks.

TOUGH AND FLEXIBLE STEEL CABLE

High performance steel cables within the cable/ply package are designed to meet the demand of today's high horsepower farm equipment. A precise balance of tensile strength and flexibility allows for exceptional durability.

STEEL CORD ENVIRONMENTAL EXPOSURE

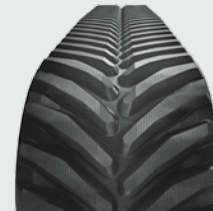


TREAD DESIGN OPTIONS

Firestone tracks are available in a range of sizes and tread patterns. **Visit [FirestoneAg.com](https://www.firestoneag.com) for your specific needs.**

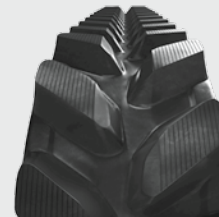
TREAD PATTERN EXAMPLES

CLASS 4 AND 5

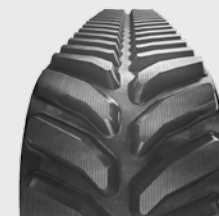


30" wide

CLASS 6

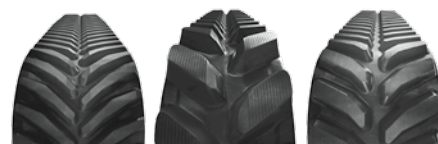


16" wide



30" wide

RUBBER TRACK LIST



Material ID #	Series	Model Series	Track Width (mm)	Tread Bars Qty
AGCO Row Crop Series Tractors				
3678	ALL TRAC CLS 4 18X58 ST	Challenger MT700	457.2	116
3679	ALL TRAC CLS 4 24X58 ST	Challenger MT700	609.6	116
3680	ALL TRAC CLS 4 30X58 ST	Challenger MT700	762.0	116
AGCO Tillage Series Tractors				
3687	ALL TRAC CLS 5 30X66 ST	Challenger MT800	762.0	132
3689	ALL TRAC CLS 6 30X50 ST	Challenger MT800	762.0	100
CATERPILLAR Row Crop Series Tractors				
3666	ALL TRAC CLS 4 18X53 ST	Challenger 35-55	457.2	106
3665	ALL TRAC CLS 4 24X53 ST	Challenger 35-55	609.6	106
3668	ALL TRAC CLS 4 30X53 ST	Challenger 35-55	762.0	106
CATERPILLAR Tillage Series Tractors				
3676	ALL TRAC CLS 4 24X56 ST	Challenger 65-95	609.6	112
3677	ALL TRAC CLS 4 30X56 ST	Challenger 65-95	762.0	112
JOHN DEERE Row Crop Series Tractors				
3681	ALL TRAC CLS 5 18X59 ST	8RT	457.2	118
3682	ALL TRAC CLS 5 24X59 ST	8RT	609.6	118
3683	ALL TRAC CLS 5 30X59 ST	8RT	762.0	118
3670	ALL TRAC CLS 6 16X41 ST	8000T	406.4	82
3671	ALL TRAC CLS 5 18X54 ST	8000T	457.2	108
3672	ALL TRAC CLS 4 24X54 ST	8000T	609.6	108
3675	ALL TRAC CLS 4 30X54 ST	8000T	762.0	108
JOHN DEERE Tillage Series Tractors				
3684	ALL TRAC CLS 6 30X48 ST	9000T	762.0	96
3688	ALL TRAC CLS 6 30X49 ST	9030T/9RT	762.0	98
JOHN DEERE Harvester Series Tractors				
3669	ALL TRAC CLS 3 34X46 ST	Harvester	863.6	92

Tread Height (mm)	Tread Pitch (mm)	Guide/ Drive Lug Qty	Carcass Plies	Carcass Main Cable Size (mm)	Carcass Thickness (mm)	Carcass Edge Thickness (mm)
AGCO Row Crop Series Tractors						
50.0	152.4	58	4	4.5	37	45.5
50.0	152.4	58	3	4.5	37	46.0
50.0	152.4	58	3	4.5	37	46.0
AGCO Tillage Series Tractors						
50.0	152.4	66	4	5.3	41	50.0
70.0	200.9	50	4	5.3	41	46.0
CATERPILLAR Row Crop Series Tractors						
50.0	152.4	53	3	4.5	37	45.5
50.0	152.4	53	3	4.5	37	46.0
50.0	152.4	53	3	4.5	37	46.0
CATERPILLAR Tillage Series Tractors						
50.0	152.4	56	3	4.5	37	46.0
50.0	152.4	56	3	4.5	37	46.0
JOHN DEERE Row Crop Series Tractors						
50.0	152.4	59	4	5.3	41	45.5
50.0	152.4	59	4	5.3	41	50.0
50.0	152.4	59	4	5.3	41	50.0
63.5	200.9	41	4	4.5	41	46.0
50.0	152.4	54	4	5.3	41	45.5
50.0	152.4	54	3	4.5	37	46.0
50.0	152.4	54	3	4.5	37	46.0
JOHN DEERE Tillage Series Tractors						
70.0	200.9	48	4	5.3	41	55.0
70.0	200.9	49	4	5.3	41	55.0
JOHN DEERE Harvester Series Tractors						
50.0	152.4	46	3	4.5	32	23.0



AGRICULTURAL RUBBER TRACKS

**LIMITED PRO RATA WARRANTY –
AGRICULTURAL USE**
FOR FIRESTONE-BRANDED AGRICULTURAL
RUBBER TRACKS

EFFECTIVE JULY 1, 2015

WARRANTY



TRACKS COVERED

This Limited Warranty covers all new Firestone-branded Agricultural Rubber Tracks, used in normal agricultural service, when purchased from a Bridgestone Canada Inc. (BSCA) authorized dealer or distributor (the “Covered Ag Tracks”).

WHAT IS WARRANTED

Subject to the terms, limitations and exclusions of this Limited Warranty, BSCA warrants to the original end user of the Covered Ag Tracks that if the track becomes unfit for the use for which it was designed due to a manufacturing defect in workmanship or material within forty-eight (48) months from the date of purchase or 4,000 hours of operation, whichever occurs first, such track will be replaced with an equivalent new Firestone-branded Agricultural Rubber Track on the basis set forth in the section below titled “Limited Warranty Period and Pro Rata Percentages.”

WHAT IS NOT WARRANTED

1. Any damage occurring in shipment.
2. Any damage caused during installation.
3. Normal wear and tear.
4. Tracks used for any non-agricultural or industrial applications or services.
5. Any damage caused by or attributable to improper undercarriage maintenance, use of undercarriage components or other components that are not original equipment manufacturer (OEM) specification.

6. Any damage caused by use of the Covered Ag Tracks on a gear tooth drive system (positive drive system).
7. Any damage caused by or attributable to unauthorized alterations, modifications or repairs (including without limitation any modification or replacement of guide blocks, tread bars, lugs or other parts or accessories), or failure to comply with BSCA recommendations on use or maintenance of the Covered Ag Tracks.
8. Any damage caused by use in inappropriate environmental conditions, or any other use outside of BSCA's recommendations or specifications.
9. Any damage caused by accident, misuse, abuse, overload, sabotage, neglect, mishandling, misapplication, faulty installation or Acts of God or nature or other factors beyond BSCA's control.

This Limited Warranty does not cover the cost of removing the Covered Ag Tracks or installing a replacement product.

WARRANTY CLAIMS PROCEDURE

Warranty claims must be submitted with proof of purchase of the Covered Ag Tracks to the nearest BSCA Firestone tracks dealer within fifteen (15) days after the date of the incident giving rise to the warranty claim along with photographs of the damaged area. At the sole option of BSCA, the Covered Ag Track must be available for inspection at the claimant's expense. BSCA, at its sole discretion, shall examine the Covered Ag Track and determine whether damage to the Covered Ag Track was a result of a manufacturing defect in workmanship or material and, if so, determine the applicable remedy.

Warranty claim forms are available from a BSCA authorized distributor or dealer.

LIMITED WARRANTY PERIOD AND PRO RATA PERCENTAGES

If BSCA determines a Covered Ag Track is unfit for the use for which it was designed due to a manufacturing defect in workmanship or material during Service Months (as defined below) 0 through 12 and Service Hours 0 through 1,000, and with a Tread Wear Rate (as defined below) of less than 25%, the Covered Ag Track shall be replaced, without charge, by an equivalent new Firestone-branded Agricultural Rubber Track.

If BSCA determines the Covered Ag Track is unfit for the use for which it was designed due to a manufacturing defect in workmanship or material after the 12th Service Month, 1,000th Service Hour or after the Tread Wear Rate is greater than 25%, such Covered Ag Track shall be eligible for replacement with an equivalent new Firestone-branded Agricultural Rubber Track at a prorated purchase price calculated by the customer's normal buying price multiplied by the Pro Rata Collection percentage in the table below. The Pro Rata Collection Percentage shall be determined using the Service Months, Service Hours or the Tread Wear Rate, whichever produces the greater Pro Rata Collection Percentage.

Pro Rata Collection Percentage Table

Months of Service or During	Hours of Service	If Tread Wear Rate Is	Pro Rata Collection Percentage
0-12	0-1,000	< 25%	0%
12-24	1,001-2,000	26%-49%	25%
12-36	1,001-3,000	50%-74%	50%
12-48	1,001-4,000	>75%	75%
At the end of the 48th month or after 4,000 service hours coverage expires			100%

For the purpose of this Limited Warranty, (i) the “Service Month” means the period from the date of purchase (proof of purchase required) of the Covered Ag Track by the original end user to the month in which the Warranty Claim was made, (ii) the “Service Hour” means the actual number of hours of operation from the time the Covered Ag Track has been installed on a piece of equipment and (iii) “the Tread Wear Rate” means the percentage calculated based on the following formula, which percentage shall be determined by BSCA based on the related information of each item of the following formula.

$$\text{TREAD WEAR RATE} = \frac{A - B}{A - C} \times 100$$

A = “Original Tread Depth” means the depth of the tread bars of the Covered Ag Tracks, which depth is originally designated by BSCA at the time of sale.

B = “Average Measured Tread Depth” means the average of the measured depth of the tread bars of the Covered Ag Track at the time of the claim under this Limited Warranty. Measurement instructions to determine Average Measured Tread Depth can be found in the Firestone Agricultural Rubber Track Manual.

C = “Worn-Out Tread Depth” means the depth of the tread bars of the Covered Ag Track, which is designated by BSCA as the limitation of use and service. The Worn-Out Tread Depth is 10 mm (0.4”) of the original tread.

*Claims made under this Limited Warranty are only allowed if the Average Measured Tread Depth is higher than the Worn-Out Tread Depth. If the Average Measured Tread Depth is lower than the Worn-Out Tread Depth, the Covered Ag Track is considered worn out and is no longer usable and a new Firestone Agricultural Rubber Track should be purchased at that time.

CONDITIONS AND EXCLUSIONS

Any Covered Ag Track replaced under the Limited Warranty with an equivalent new Firestone-branded Agricultural Rubber Track will be covered for the balance of the original Limited Warranty period. THIS IS THE ORIGINAL END USER’S SOLE AND EXCLUSIVE REMEDY, AND BSCA’S ONLY OBLIGATION, FOR ANY DEFECTIVE FIRESTONE-BRANDED AGRICULTURAL RUBBER TRACK OR ANY BREACH OF WARRANTY WITH RESPECT TO THE FIRESTONE-BRANDED AGRICULTURAL RUBBER TRACK.

WARRANTY DISCLAIMER. OTHER THAN THE LIMITED WARRANTY DESCRIBED ABOVE AND TO THE EXTENT PERMITTED BY APPLICABLE LAW, BSCA MAKES NO WARRANTIES, CONDITIONS, OR GUARANTEES EXPRESS, IMPLIED OR LEGAL ARISING FROM STATUTE, COURSE OF DEALING, USAGE OR TRADE OR OTHERWISE, INCLUDING WITHOUT LIMITATION ANY WARRANTIES OR CONDITIONS OF MERCHANTABILITY,

LIMITED WARRANTY
FOR FIRESTONE AGRICULTURAL RUBBER TRACKS

NONINFRINGEMENT OR FITNESS FOR A PARTICULAR PURPOSE, ALL OF WHICH ARE EXPRESSLY DISCLAIMED AND EXCLUDED.

TO THE EXTENT PERMITTED BY LAW, BRIDGESTONE CANADA INC. AND ITS AFFILIATES SHALL NOT BE LIABLE FOR ANY INDIRECT, GENERAL, SPECIAL, INCIDENTAL, PUNITIVE OR CONSEQUENTIAL DAMAGES, INCLUDING ECONOMIC LOSS, LOST PROFITS, LOSS OF TIME OR LOSS OF VEHICLE USE OR INCONVENIENCE, COST OF TOWING, PERSONAL INJURY OR DEATH SUSTAINED IN CONNECTION WITH THESE TRACKS OR FOR ANY OTHER DAMAGES ARISING DIRECTLY OR INDIRECTLY FROM ANY TORT RELATING TO THE MANUFACTURE OR SUPPLY OF A TRACK COVERED BY THIS LIMITED WARRANTY. TO THE EXTENT PERMITTED BY LAW, THE REMEDIES SET OUT IN THIS LIMITED WARRANTY ARE EXHAUSTIVE AND THE TOTAL LIABILITY OF BRIDGESTONE CANADA INC. AND ITS AFFILIATES WITH RESPECT TO ANY TRACK COVERED BY THIS LIMITED WARRANTY SHALL NOT EXCEED THE PURCHASE PRICE OF THE TRACK UPON WHICH SUCH LIABILITY IS BASED.

Only the actual owner-user of the Covered Ag Tracks may make an adjustment claim under this Limited Warranty and only for tracks used in Canada.

Nothing in this Limited Warranty is intended to be a representation that failure cannot occur.

LIMITED WARRANTY
FOR FIRESTONE AGRICULTURAL RUBBER TRACKS

NO ONE, INCLUDING WITHOUT LIMITATION, ANY EMPLOYEE, DEALER, RETAILER OR REPRESENTATIVE, HAS THE AUTHORITY TO MAKE ANY REPRESENTATION, PROMISE OR AGREEMENT OR GIVE ANY WARRANTY THAT IN ANY WAY VARIES THE TERMS OR CONDITIONS HEREOF.

THESE LIMITED WARRANTIES AND PROTECTIONS GIVE YOU SPECIFIC LEGAL RIGHTS AND YOU MAY ALSO HAVE OTHER RIGHTS THAT MAY VARY FROM PROVINCE TO PROVINCE. TO THE EXTENT THAT THE PROVISIONS OF ANY APPLICABLE LEGISLATION EXPRESSLY REPLACE, ELIMINATE, AMEND, EXTEND OR PROHIBIT ANY TERM OR TERMS SHALL BE ACCORDINGLY REPLACED, ELIMINATED, AMENDED OR EXTENDED, AS THE CASE MAY BE, IN ACCORDANCE WITH SUCH LEGISLATION.

LIMITED WARRANTY

FOR FIRESTONE AGRICULTURAL RUBBER TRACKS
USED FOR NON-AGRICULTURAL/INDUSTRIAL USE



AGRICULTURAL RUBBER TRACKS

**LIMITED PRO RATA WARRANTY –
NON-AGRICULTURAL/INDUSTRIAL USE**
FOR FIRESTONE-BRANDED AGRICULTURAL
RUBBER TRACKS USED FOR NON-AGRICULTURAL/
INDUSTRIAL USE

EFFECTIVE JULY 1, 2015

WARRANTY



TRACKS COVERED

This Limited Warranty covers new All Traction Class 5 and All Traction Class 6 Firestone-branded Agricultural Rubber Tracks purchased from a Bridgestone Canada Inc. (BSCA) authorized dealer or distributors that are used for non-agricultural/industrial use (the “Covered Rubber Tracks”). All Traction Class 3 and All Traction Class 4 Firestone-branded Agricultural Rubber Tracks are not subject to any warranty for non-agricultural/industrial use.

WHAT IS WARRANTED

Subject to the terms, limitations and exclusions of this Limited Warranty, BSCA warrants to the original end user of the Covered Rubber Tracks that if the track becomes unfit for the use for which it was designed due to a manufacturing defect in workmanship or material within twenty-four (24) months from the date of purchase or within 2,000 hours of operation, whichever occurs first, such track will be replaced with an equivalent new Firestone-branded Agricultural Rubber Track on the basis set forth in the section below titled “Limited Warranty Period and Pro Rata Percentages.”

WHAT IS NOT WARRANTED

1. Any damage occurring in shipment.
2. Any damage caused during installation.
3. Normal wear and tear.
4. Any damage caused by or attributable to improper undercarriage maintenance, use of undercarriage components or other components that are not original equipment manufacturer (OEM) specification.

LIMITED WARRANTY

FOR FIRESTONE AGRICULTURAL RUBBER TRACKS
USED FOR NON-AGRICULTURAL/INDUSTRIAL USE

5. All Traction Class 3 and All Traction Class 4 Firestone-branded Agricultural Rubber Tracks.
6. Any damage caused by use of the Covered Rubber Tracks on a gear tooth drive system (positive drive system).
7. Any damage caused by or attributable to unauthorized alterations, modifications or repairs (including without limitation any modification or replacement of guide blocks, tread bars, lugs or other parts or accessories), or failure to comply with BSCA recommendations on use or maintenance of the Covered Rubber Tracks.
8. Any damage caused by use in inappropriate environmental conditions, or any other use outside of BSCA's recommendations or specifications.
9. Any damage caused by accident, misuse, abuse, overload, sabotage, neglect, mishandling, misapplication, faulty installation or Acts of God or nature or other factors beyond BSCA's control.

This Limited Warranty does not cover the cost of removing the Covered Rubber Track or installing a replacement product.

WARRANTY CLAIMS PROCEDURE

Warranty claims must be submitted with proof of purchase of the Covered Rubber Tracks to the nearest BSCA Firestone tracks dealer within fifteen (15) days after the date of the incident giving rise to the warranty claim along with photographs of the damaged area. At the sole option of BSCA, the Covered Rubber Track must be available for inspection at the claimant's expense. BSCA, at its sole discretion, shall examine the Covered Rubber Track and determine whether damage to the Covered Rubber Track was a result of a manufacturing defect in workmanship

LIMITED WARRANTY

FOR FIRESTONE AGRICULTURAL RUBBER TRACKS
USED FOR NON-AGRICULTURAL/INDUSTRIAL USE

or material and, if so, determine the applicable remedy. Warranty claim forms are available from a BSCA authorized distributor or dealer.

LIMITED WARRANTY PERIOD AND PRO RATA PERCENTAGES

If BSCA determines a Covered Rubber Track is unfit for the use for which it was designed due to a manufacturing defect in workmanship or material during Service Months (as defined below) 0 through 12 and Service Hours 0 through 1,000 and with a Tread Wear Rate (as defined below) of less than 20%, the Covered Rubber Track shall be replaced, without charge, by an equivalent new Firestone-branded Agricultural Rubber Track.

If BSCA determines the Covered Rubber Track is unfit for the use for which it was designed due to a manufacturing defect in workmanship or material after the 12th Service Month, the 1,000th Service Hour or after the Tread Wear Rate is greater than 20%, such Covered Rubber Track shall be eligible for replacement with an equivalent new Firestone-branded Agricultural Rubber Track at a prorated purchase price calculated by the customer's normal buying price multiplied by the Pro Rata Percentage in the table below. The Pro Rata Collection Percentage shall be determined using the Service Months, Service Hours or the Tread Wear Rate, whichever produces the greater Pro Rata Collection Percentage.

LIMITED WARRANTY

FOR FIRESTONE AGRICULTURAL RUBBER TRACKS
USED FOR NON-AGRICULTURAL/INDUSTRIAL USE

LIMITED WARRANTY

FOR FIRESTONE AGRICULTURAL RUBBER TRACKS
USED FOR NON-AGRICULTURAL/INDUSTRIAL USE

Pro Rata Collection Percentage Table

Months of Service or During	Hours of Service	Usable Tread Wear	
		0-20%	>21%
		Pro Rata Collection Percentage is:	
0-12	0-1,000	0%	If Greater Than 20% Use Actual Usable Tread Wear Rate Percent

At the end of the 24th month or after 2,000 service hours coverage expires

Months of Service or During	Hours of Service	Usable Tread Wear				
		0-20%	21-40%	41-60%	61-80%	81-100%
		Pro Rata Collection Percentage is:				
13-24	1,001-2,000	30%	40%	60%	80%	100%

At the end of the 24th month or after 2,000 service hours coverage expires

For the purpose of this Limited Warranty, (i) the “Service Month” means the period from the date of purchase (proof of purchase required) of the Covered Rubber Track by the original end user to the month in which the Warranty Claim was made, (ii) the “Service Hour” means the actual number of hours of operation from the time the Covered Rubber Track has been installed on a piece of equipment and (iii) “the Tread Wear Rate” means the percentage calculated based on the following formula, which percentage shall be determined by BSCA based on the related information of each item of the following formula.

$$\text{TREAD WEAR RATE} = \frac{A - B}{A - C} \times 100$$

A = “Original Tread Depth” means the depth of the tread bars of the Covered Rubber Track, which depth is originally designated by BSCA at the time of sale.

B = “Average Measured Tread Depth” means the average of the measured depth of the tread bars of the Covered Rubber Track at the time of the claim under this Limited Warranty. Measurement instructions to determine Average Measured Tread Depth can be found in the Firestone Agricultural Rubber Track Manual.

C = “Worn-Out Tread Depth” means the depth of the tread bars of the Covered Rubber Track, which is designated by BSCA as the limitation of use and service. The Worn-Out Tread Depth is 10 mm (0.4”) of the original tread.

Claims made under this Limited Warranty are only allowed if the Average Measured Tread Depth is higher than the Worn-Out Tread Depth. If the Average Measured Tread Depth is lower than the Worn-Out Tread Depth, the Firestone-branded Agricultural Rubber Track is considered worn out and is no longer usable and a new Firestone-branded Agricultural Rubber Track should be purchased at that time.

LIMITED WARRANTY

FOR FIRESTONE AGRICULTURAL RUBBER TRACKS
USED FOR NON-AGRICULTURAL/INDUSTRIAL USE

LIMITED WARRANTY

FOR FIRESTONE AGRICULTURAL RUBBER TRACKS
USED FOR NON-AGRICULTURAL/INDUSTRIAL USE

CONDITIONS AND EXCLUSIONS

Any Covered Rubber Track replaced under the Limited Warranty with an equivalent new Firestone-branded Agricultural Rubber Track will be covered for the balance of the original Limited Warranty period. THIS IS THE ORIGINAL END USER'S SOLE AND EXCLUSIVE REMEDY, AND BSCA'S ONLY OBLIGATION, FOR ANY DEFECTIVE FIRESTONE-BRANDED AGRICULTURAL RUBBER TRACK OR ANY BREACH OF WARRANTY WITH RESPECT TO THE FIRESTONE-BRANDED AGRICULTURAL RUBBER TRACK.

WARRANTY DISCLAIMER. OTHER THAN THE LIMITED WARRANTY DESCRIBED ABOVE, AND TO THE EXTENT PERMITTED BY APPLICABLE LAW, BSCA MAKES NO WARRANTIES, CONDITIONS, OR GUARANTEES EXPRESS, IMPLIED OR LEGAL ARISING FROM STATUTE, COURSE OF DEALING, USAGE OR TRADE OR OTHERWISE, INCLUDING WITHOUT LIMITATION ANY WARRANTIES OR CONDITIONS OF MERCHANTABILITY, NONINFRINGEMENT OR FITNESS FOR A PARTICULAR PURPOSE, ALL OF WHICH ARE EXPRESSLY DISCLAIMED AND EXCLUDED.

TO THE EXTENT PERMITTED BY LAW, BRIDGESTONE CANADA INC. AND ITS AFFILIATES SHALL NOT BE LIABLE FOR ANY INDIRECT, GENERAL, SPECIAL, INCIDENTAL, PUNITIVE OR CONSEQUENTIAL DAMAGES, INCLUDING ECONOMIC LOSS, LOST PROFITS, LOSS OF TIME OR LOSS OF VEHICLE USE OR INCONVENIENCE, COST OF TOWING, PERSONAL INJURY OR DEATH SUSTAINED IN CONNECTION WITH THESE TRACKS OR FOR ANY OTHER DAMAGES ARISING DIRECTLY OR INDIRECTLY FROM ANY

TORT RELATING TO THE MANUFACTURE OR SUPPLY OF A TRACK COVERED BY THIS LIMITED WARRANTY. TO THE EXTENT PERMITTED BY LAW, THE REMEDIES SET OUT IN THIS LIMITED WARRANTY ARE EXHAUSTIVE AND THE TOTAL LIABILITY OF BRIDGESTONE CANADA INC. AND ITS AFFILIATES WITH RESPECT TO ANY TRACK COVERED BY THIS LIMITED WARRANTY SHALL NOT EXCEED THE PURCHASE PRICE OF THE TRACK UPON WHICH SUCH LIABILITY IS BASED.

Only the actual owner-user of the Covered Rubber Tracks may make an adjustment claim under this Limited Warranty and only for tracks used in Canada.

Nothing in this Limited Warranty is intended to be a representation that failure cannot occur.

NO ONE, INCLUDING WITHOUT LIMITATION, ANY EMPLOYEE, DEALER, RETAILER OR REPRESENTATIVE, HAS THE AUTHORITY TO MAKE ANY REPRESENTATION, PROMISE OR AGREEMENT OR GIVE ANY WARRANTY THAT IN ANY WAY VARIES THE TERMS OR CONDITIONS HEREOF.

THESE LIMITED WARRANTIES AND PROTECTIONS GIVE YOU SPECIFIC LEGAL RIGHTS AND YOU MAY ALSO HAVE OTHER RIGHTS THAT MAY VARY FROM PROVINCE TO PROVINCE. TO THE EXTENT THAT THE PROVISIONS OF ANY APPLICABLE LEGISLATION EXPRESSLY REPLACE, ELIMINATE, AMEND, EXTEND OR PROHIBIT ANY TERM OR TERMS SHALL BE ACCORDINGLY REPLACED, ELIMINATED, AMENDED OR EXTENDED, AS THE CASE MAY BE, IN ACCORDANCE WITH SUCH LEGISLATION.

Copyright © 2015 Bridgestone Canada, Inc.

Have a technical question? Contact Field Engineering:

1-800-TIRE ENG (847-3364)

Need additional information?

FirestoneAg.com

Notes:



D-698 (1-16) CAN Printed in U.S.A.



FirestoneAg.com