

CONSIDER THIS YOUR CHECK-TIRE LIGHT

TIRE CHECK

7 Simple Things To Look For

1

CHECK TIRE PRESSURE REGULARLY

Set the inflation pressure using an **inflation calculator**. Use an accurate gauge.

2

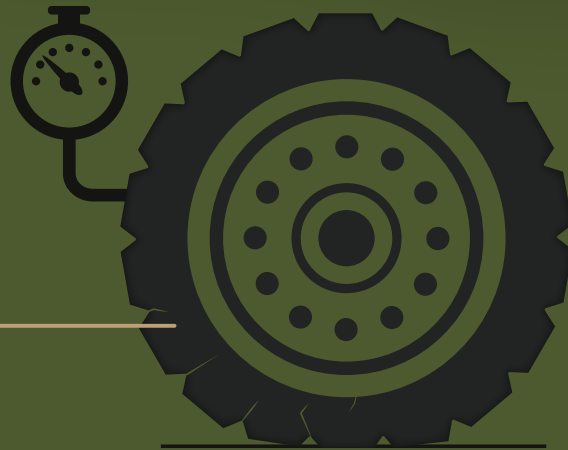
CHECK THE SIDEWALL

Sidewalls differ by tire type. Look for any cracks, cuts or other damages.

3

CHECK THE TREAD

If there's less than 20% tread left on the tire, consider new tires.



5

CHECK YOUR CONTACT AREA

Make sure there is no space between the lugs and the ground.

6

CHECK YOUR VALVE STEMS

Look for cracks, corrosion and dirt. Use a valve cap.

7

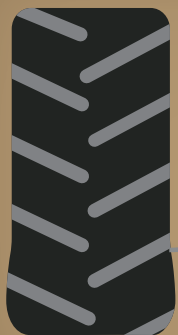
CHECK NUTS + BOLTS

Everything should be properly tightened.

4

CHECK THE TREAD AREA

Stubble damage? Exposed cords? Time for a replacement.



PROPER
INFLATION
PRESSURE



INCREASES

- Efficiency
- Tire Service Life
- ROI

DECREASES

- Downtime
- Tire Wear
- Fuel Costs



85 YEARS
— OF SERVING —
FARMERS

23° TREAD
— EQUALS —
MORE TRACTION*

Firestone
FARM HARD

*As compared to standard radial tires with 45° bar angle.