

BRIDGESTONE OFF THE ROAD TIRES

Technical Recommendation for checking tread depth on Firestone OTR Tires

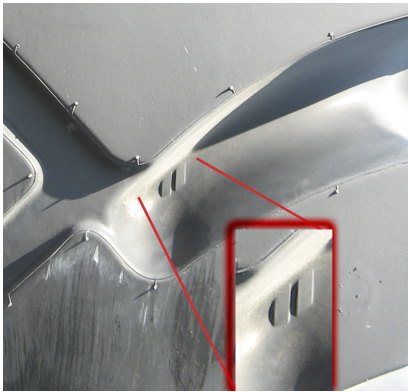
Purpose

This bulletin describes the location of tread depth measurement points on various Firestone tires by tread pattern.

Measurement (with tread wear indicators)

Some Firestone tires have tread wear indicators in the tread voids. For these tires the tread depth should be measured at these locations (See depiction below). These tread wear indicators are located at the 1/4 point in the voids of the tread.

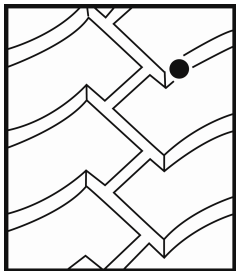
Firestone Tread Wear Indicator



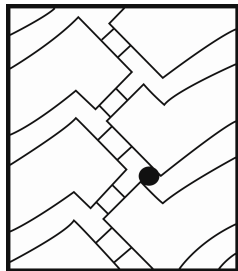
Firestone

Location of Measurement (by pattern without indicator):

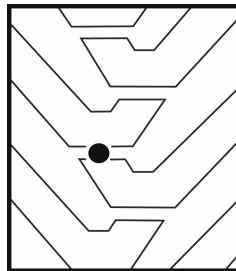
Firestone tires that do not have a tread wear indicator should be measured in the place identified in the pictures below by corresponding tread pattern.



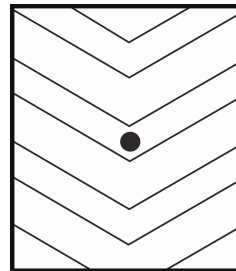
SRGDT/SDT (Recut)



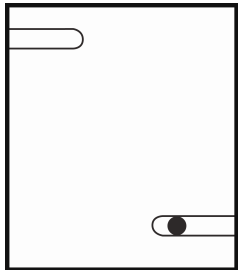
SRGDT/SDT



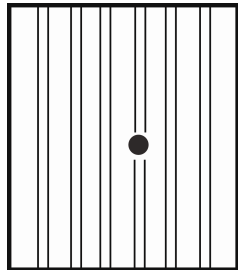
SGG / SGGRB



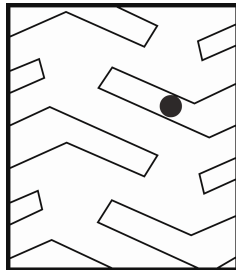
RGX



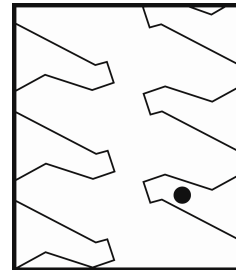
PTLD



Sand Champion



E67



Rock Master