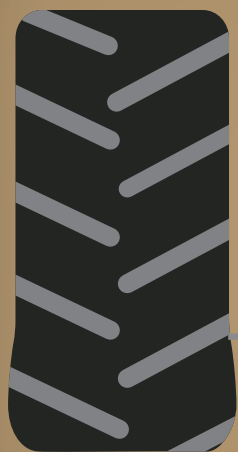


CONSIDER THIS YOUR CHECK-TIRE LIGHT

SEVEN STEP TIRE CHECK LIST

- 
- 1 CHECK TIRE PRESSURE REGULARLY**
Set the inflation pressure using an inflation calculator. Use an accurate gauge.
 - 2 CHECK THE SIDEWALL**
Sidewalls differ by tire type. Look for any cracks, cuts or other damages.
 - 3 CHECK THE TREAD**
If there's less than 20% tread left on the tire, consider new tires.
 - 4 CHECK THE TREAD AREA**
Stubble damage? Exposed cords? Time for a replacement.
 - 5 CHECK YOUR CONTACT AREA**
Make sure there is no space between the lugs and the ground.
 - 6 CHECK YOUR VALVE STEMS**
Look for cracks, corrosion and dirt. Use a valve cap.
 - 7 CHECK NUTS + BOLTS**
Everything should be properly tightened.



PROPER
INFLATION
PRESSURE



INCREASES

- Efficiency
- Tire Service Life
- ROI

DECREASES

- Downtime
- Tire Wear
- Fuel Costs



85 YEARS
— OF SERVING —
FARMERS

23° TREAD
— EQUALS —
MORE TRACTION*

Firestone
FARM HARD

*As compared to standard radial tires with 45° bar angle.