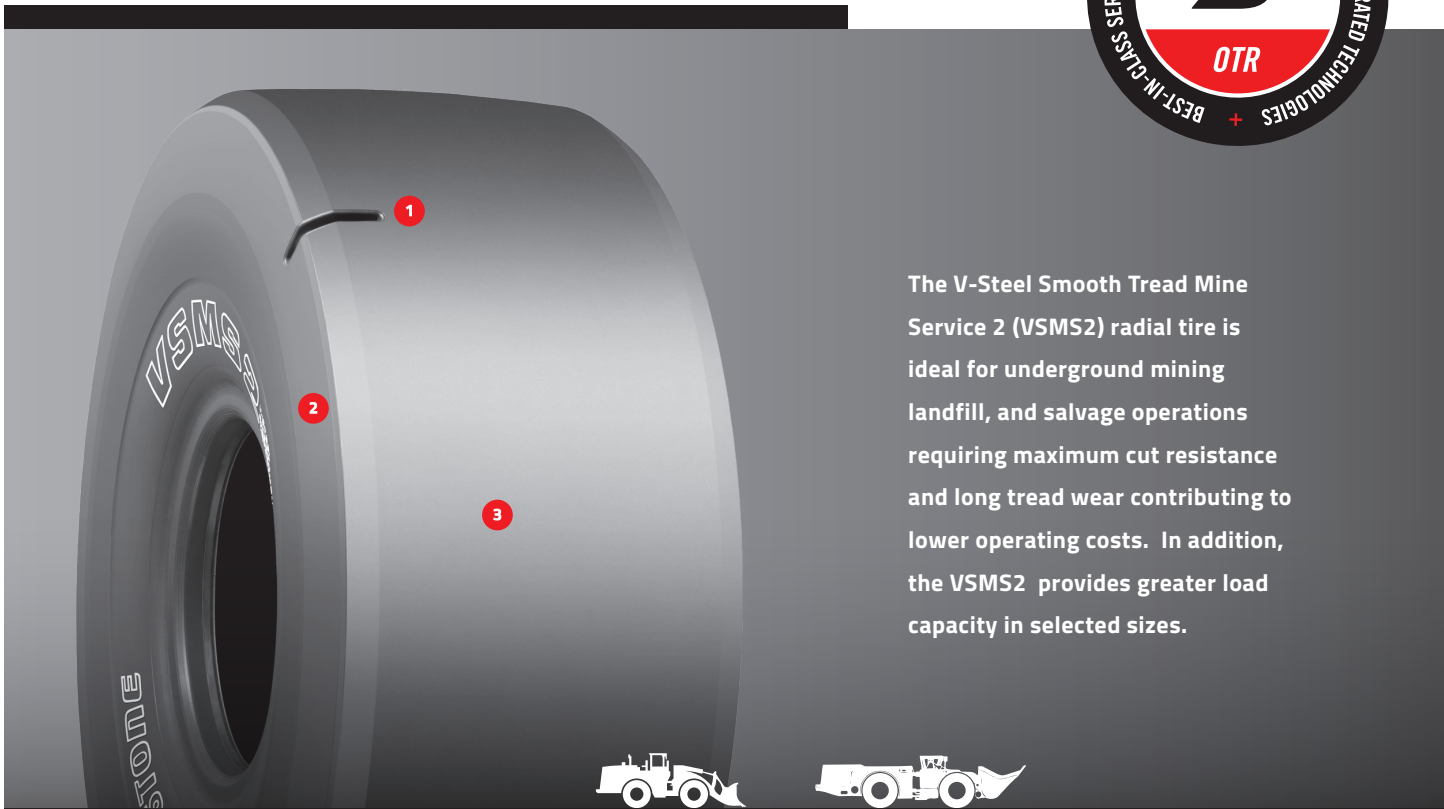


BRIDGESTONE

VSMS2

V-STEEL
SMOOTH TREAD
MINE SERVICE 2

L-5S, LHD-5S



The V-Steel Smooth Tread Mine Service 2 (VSMS2) radial tire is ideal for underground mining landfill, and salvage operations requiring maximum cut resistance and long tread wear contributing to lower operating costs. In addition, the VSMS2 provides greater load capacity in selected sizes.

LOADERS

LHDs

SPECIALIZED FEATURES

1 OPTIMIZED BELT AND ENHANCED BEAD CORD STRUCTURE***

Allows for increased load capacity equal to 3-star rating at 2-star rating air pressure for optimal performance

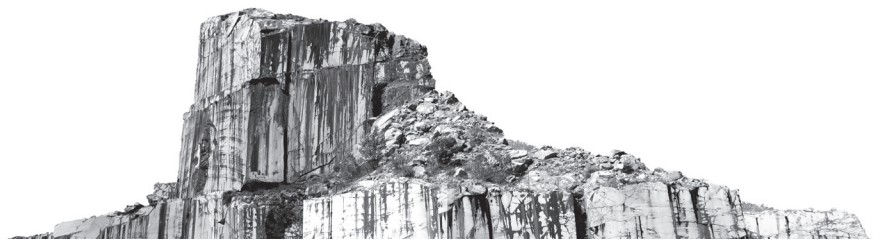
2 INNOVATIVE SIDEWALL SHAPE

Delivers a 30% decrease++ in the frequency of sidewall cuts reaching the ply, and increases total life by 5%*

*Performance improvements are comparisons with Bridgestone VSMS tire.

3 86-132/32NDS DEEP TREAD

For long wear and protection in severe operating environments



BRIDGESTONE COMMERCIAL

See your Bridgestone representative for more information.

BS125 - V24 ©Bridgestone Americas Tire Operations LLC. All Rights Reserved.

BRIDGESTONE

Firestone

BRIDGESTONE

VSMS2

V-STEEL
SMOOTH TREAD
MINE SERVICE 2

L-5S, LHD-5S

CATEGORY	SIZE	PLY/STAR RATING	COMPOUND/ CONSTRUCTION	TRA	ARTICLE #	AVG. WT. [⊠] [LBS/KG]	OTD [⊠] [32"/MM]	OVERALL DIAMETER [⊠] [IN/MM]	OVERALL WIDTH [⊠] [IN/MM]
SMALL TUBELESS	17.5R25	2*	D2A	L-5S	4724	642 291	86 68.5	54 1,371	17.8 453
	26.5R25	2*	D2A	L-5S	4604	1,777 806	120 95.0	69.9 1,775	27.7 704
	26.5R25**	2* SUB	L2A	LHD-5S	11426	1,778 806	120 95.0	69.9 1,775	27.7 704
	29.5R25	2*	D2A	L-5S	6392	2,405 1,091	131 104.0	75.1 1,908	31.1 790
LARGE TUBELESS	29.5R29	2*	D2A	L-5S	4605	2,449 1,111	132 104.5	79.1 2,008	31.2 792
	29.5R29**	2* SUB	L2A	LHD-5S	12356	2,449 1,111	132 104.0	79.0 1,908	31.2 790

⊠ Actual specifications may vary depending on the tire produced. Off-road tire limited warranty information is available from your Bridgestone representative or dealer.
** The 26.5R25 2* Sub and 29.5R29 2* Sub are only applicable for LHD Load-Haul-Dump applications

BRIDGESTONE COMMERCIAL

See your Bridgestone representative for more information.

"Best-In-Class Service" is based on the largest number of dealers in the commercial tire dealer network in U.S. found on www.commercial.bridgestone.com. As compared to the 2022 U.S. Replacement and Retreaded Medium/Heavy Truck Tire Brands with similar market share as listed in the January 2023 Modern Tire Dealer (page 34).

BRIDGESTONE**Firestone**