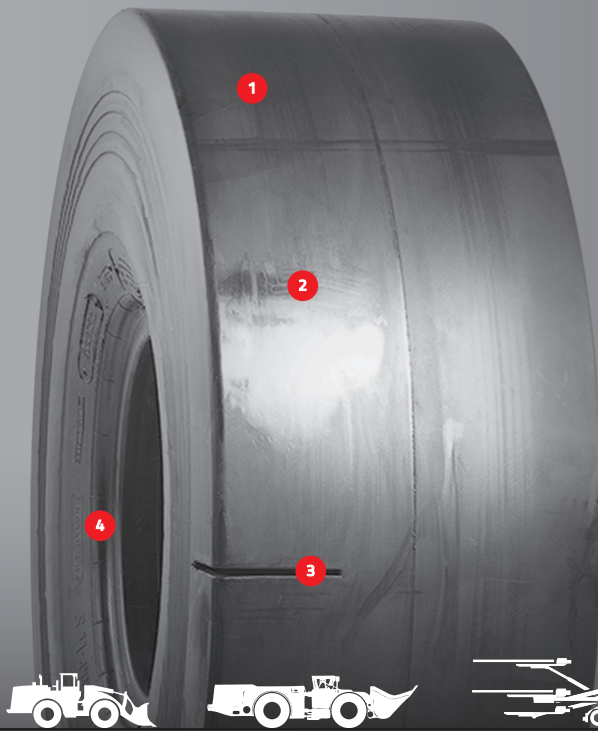


BRIDGESTONE

VSMS

V-STEEL
SMOOTH TREAD
MINE SERVICE

L-5 S, INDUSTRIAL SERVICE IND-5



The Steel Smooth Tread Mine Service (VSMS) radial tire is ideal for underground mining, landfill, and salvage operations requiring maximum cut resistance and long tread wear contributing to lower operating costs. Also is used for Port applications.



LOADERS

LHDs

DRILLS

STRADDLE CARRIERS

CONTAINER HANDLERS

SPECIALIZED FEATURES

1 EXTRA-DEEP TREAD

For severe conditions such as rocky surfaces, underground mines, open pits and quarries

2 TOUGH TREAD COMPOUND

Delivers maximum cut and wear resistance

3 TREAD WEAR INDICATOR

Shows depth of wear on tire

4 EXTRA-HEAVY-DUTY 2* ALL - STEEL CASING DESIGN



BRIDGESTONE COMMERCIAL

See your Bridgestone representative for more information.

BS125 - V24 ©Bridgestone Americas Tire Operations LLC. All Rights Reserved.

BRIDGESTONE

Firestone

BRIDGESTONE

VSMS

V-STEEL
SMOOTH TREAD
MINE SERVICE

L-5S, INDUSTRIAL SERVICE IND-5

CATEGORY	SIZE	PLY/STAR RATING	COMPOUND/ CONSTRUCTION	TRA	ARTICLE #	AVG. WT. [□] [LBS/KG]	OTD [32" /MM]	OVERALL DIAMETER [□] [IN/MM]	OVERALL WIDTH [IN/MM]
SMALL TUBE TYPE	9.00R20	2*	D2A	L-5S	150908	236 107	64 51	41.5 1,054	10.2 260
	12.00R20	2*	D2A	L-5S	150916	351 159	72 57	46.2 1,173	12.3 312
	12.00R24	2*	D2A	L-5S	150924	410 186	72 57	50.2 1,275	12.3 312
	14.00R24	2*	D2A	L-5S	211240	603 273	91 72	54.8 1,394	15.4 390
SMALL TUBELESS	18.00R25	2*	D2A	L-5S	422282	1,092 495	106 84.5	65.9 1,675	20.2 512
	18.00R25	2*	IDU	Industrial Service	423785	1,100 499	106 84.5	66.2 1,681	20.2 512
LARGE TUBELESS	35/65R33	2*	D2A	L-5S	006394	2,921 1,325	122 97	81.5 2,071	34.6 879

[□] Actual specifications may vary depending on the tire produced. Off-road tire limited warranty information is available from your Bridgestone representative or dealer.

BRIDGESTONE COMMERCIAL

See your Bridgestone representative for more information.

BS125 - V24 ©Bridgestone Americas Tire Operations LLC. All Rights Reserved.

"Best-In-Class Service" is based on the largest number of dealers in the commercial tire dealer network in U.S. found on www.commercial.bridgestone.com. As compared to the 2022 U.S. Replacement and Retreaded Medium/Heavy Truck Tire Brands with similar market share as listed in the January 2023 Modern Tire Dealer (page 34).

